



Black Wax Wellhead Test

Wellhead
Sample



Eliminator
added to sample



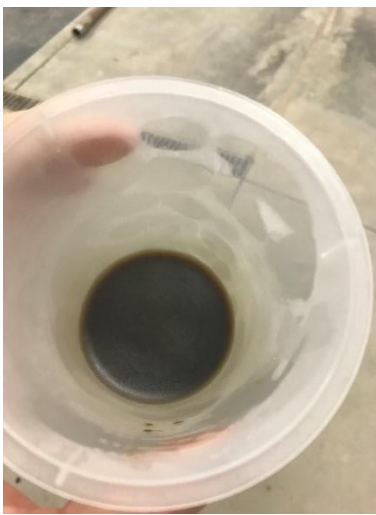
10 minutes at
room temp



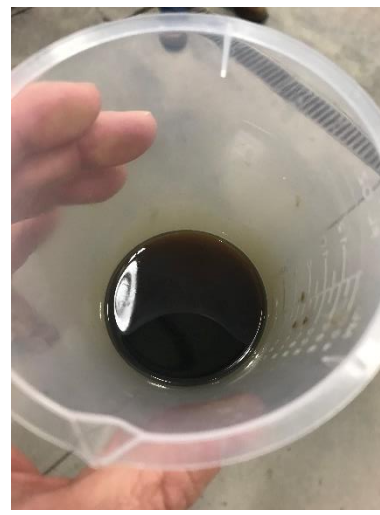
2 minutes at 80F



Sample frozen
solid to -40F



Room temp few
minutes after
frozen solid



The wellhead sample had 33% paraffin to start. After adding Eliminator and lightly heating the sample to 80F to make flowable, we froze the flowable product to -40F then brought it out and it quickly went back to flowable oil with no heat at all. Eliminator breaks the long chain hydrocarbon(paraffin) and splits it into multiple short chain hydrocarbons to where it can never form or solidify again. The product will always flow once treated adequately with Eliminator, normally 1000PPM based off oil production volume.